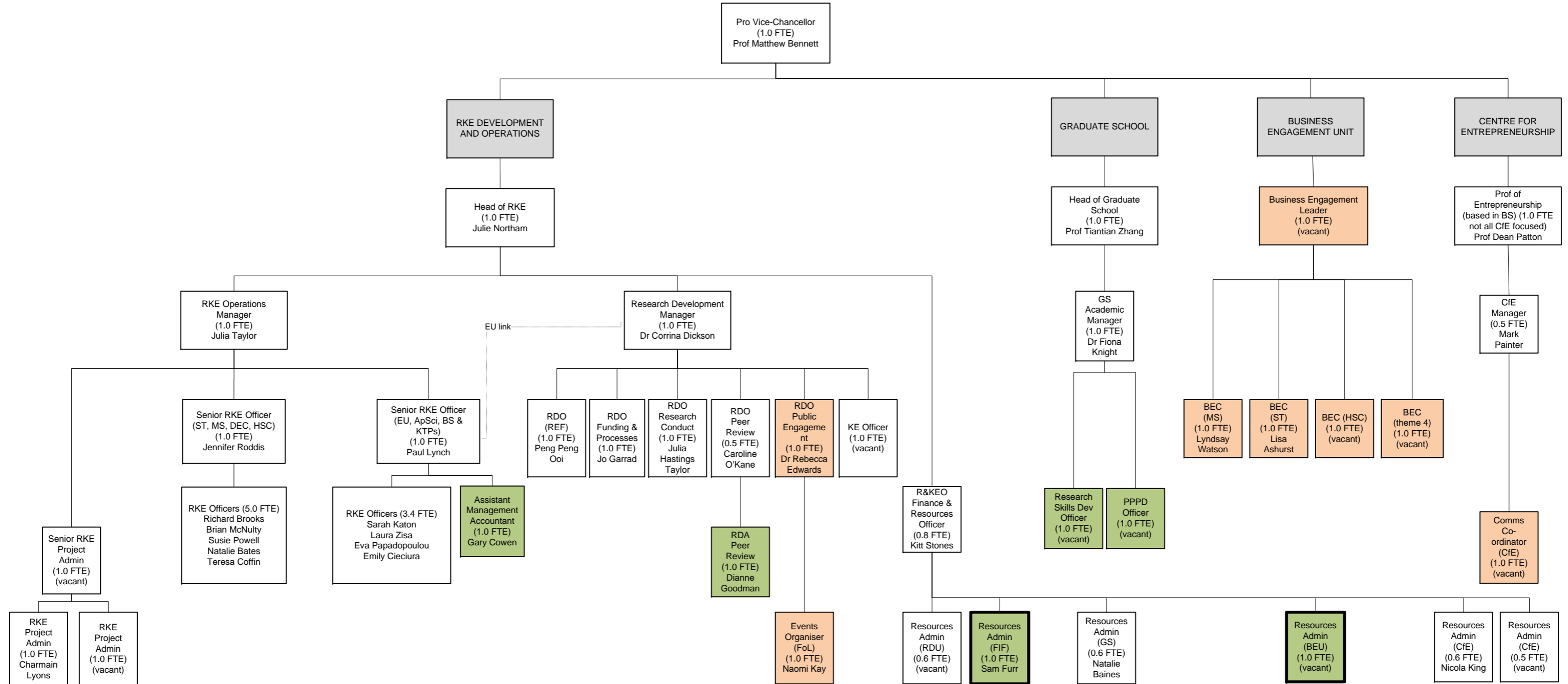


Research & Knowledge Exchange Office structure (September 2012)



With the exception of Operations, the Resources Administrators support across the whole R&KEO. Although Resources Administrators are primarily based in units the support is flexible enough to enable the administrators to flexibly support each of the units, the whole R&KEO, and one another.

Key

- Green posts are identified in 2012-13 delivery plan as new posts
- Orange posts are identified in as HEIF-5 funded
- A thicker outline indicates FIF funded posts